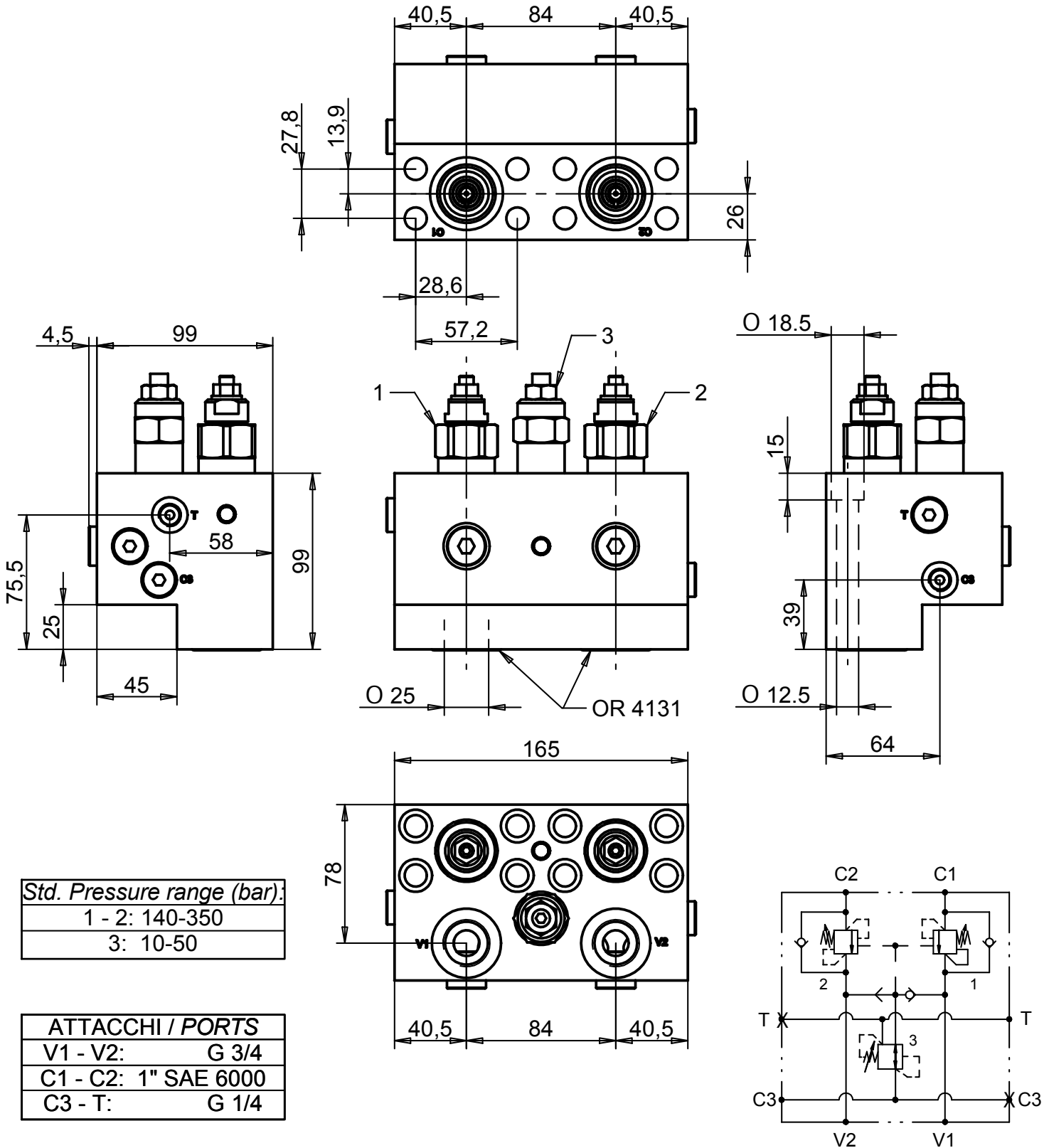


VALV. DI BILANCIAM. DOPPIA, SERIE "CE", CON RIDUTTRICE DI PRESS. PER SBLOCCO FRENO, FLANG. SU MOTORI REXROTH SERIE A2FE 80-90

DUAL PILOT ASSISTED OVERCENTRE VALVE, "CE" SERIES, WITH PRESSURE REDUCER FOR BRAKE RELEASE, FLANGEABLE ON REXROTH MOTORS "A2FE 80-90" SERIES

Tipo / Type **A-VBDE/CE/FL/RX 340/SF/RP** | 7 | 72.50



Std. Pressure range (bar):	
1 - 2:	140-350
3:	10-50

ATTACCHI / PORTS	
V1 - V2:	G 3/4
C1 - C2:	1" SAE 6000
C3 - T:	G 1/4

Portata max. (l/min)
120

Pressione max. (bar)
350

Rapp. pilot.
4:1

Collettore in acciaio
Zincated steel body