



WWW.TOTALHYDRAULICSBV.COM

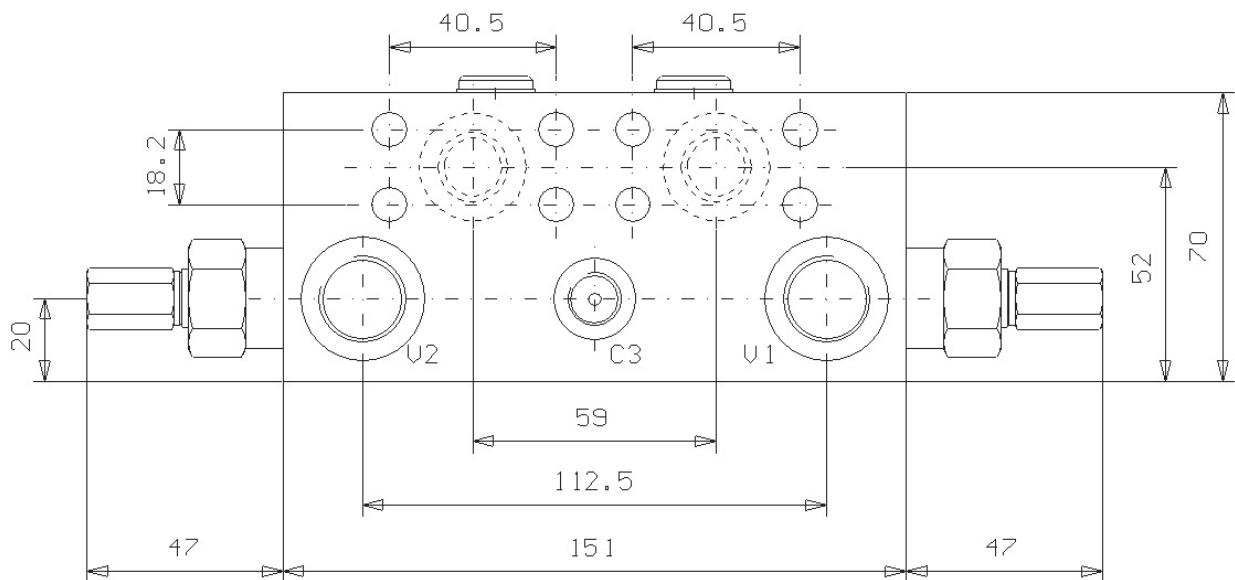
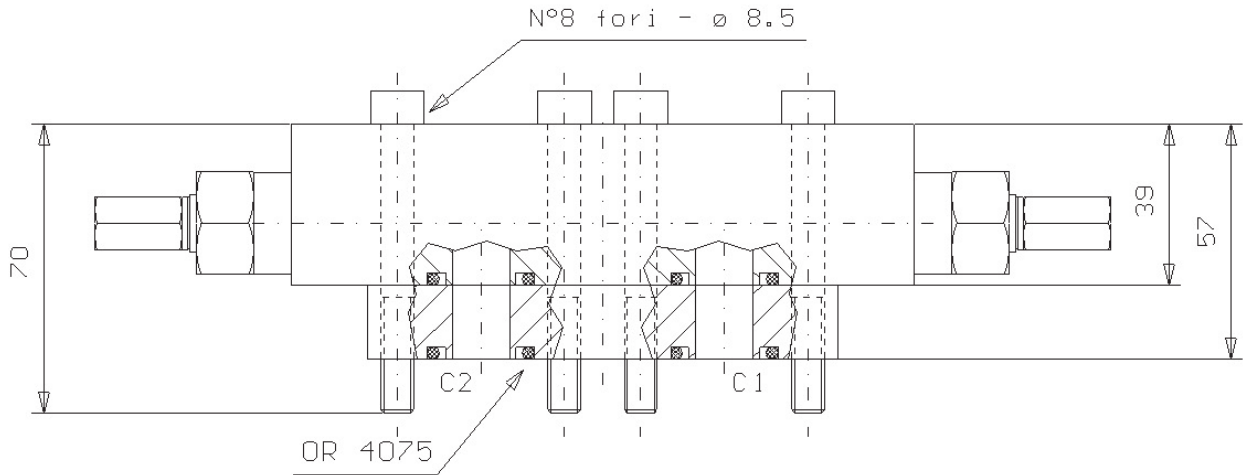
**VALVOLA DI BILANCIAMENTO DOPPIA CON SBLOCCO FRENO
FLANGIABILE SU MOTORI REXROTH SERIE A2FE 28-32**

DUAL PILOT ASSISTED OVERCENTRE VALVE, WITH BRAKE UNCLIPPING
FLANGEABLE ON REXROTH MOTORS "A2FE 28-32" SERIES

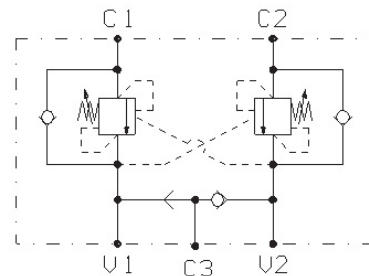
Tipo/Type: **VBDE/TR/FL/RX 120/SF**

7

70.50



| ATTACCHI | |
|----------|--------------|
| U1 - U2 | G 1/2 |
| C1 - C2 | 1/2 SAE 6000 |
| C3 | G 1/4 |



| Rapp. Pilot. | |
|----------------------------------|-------|
| STANDARD | 4.2:1 |
| A richiesta <i>On request</i> | 11:1 |

| Press. max. (Bar) |
|----------------------|
| 250 |

| Portata max. (l/min) |
|-------------------------|
| 60 |